

Welcome Back to Averill Park High School!

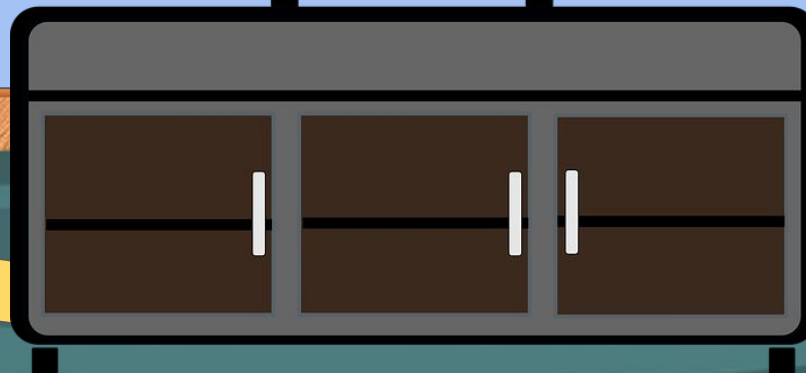


Mrs. Mein

Mrs. Leach



Mr. Quiles





APHS Daily Schedule

	Time	Minutes		Time	Minutes
Block 1/5	7:30am - 8:50am	80	Period 1	7:30am - 8:08am	38
			Period 2	8:11am - 8:50am	39
Announcements	8:50am - 8:56am	6	In Block 1 & 5		
5 Min. Passing					5
Block 2/6	9:01am - 10:21am	80	Period 3	9:01am - 9:39am	38
			Period 4	9:42am - 10:21am	39
5 Min. Passing					5
Advisory Period	10:26 am - 10:50am	24			
5 Min. Passing					5
Block 3/7	A Lunch	80	Lunch	10:55am - 11:20am	25
			Class	11:25am - 12:45pm	80
			Class	10:55am - 11:20am	25
			Lunch	11:23am - 11:48am	25
	B Lunch	80	Class	11:50am - 12:45pm	55
			Class	10:55am - 11:48am	53
			Lunch	11:51am - 12:16pm	25
			Class	12:18pm - 12:45pm	27
	C Lunch	80	Class	10:55am - 12:15pm	80
			Period 5	10:55am - 11:34am	39
			Period 6	11:37am - 12:15pm	39
			Lunch	12:19pm - 12:45pm	26
5 Min. Passing					5
Block 4/8	12:50pm - 2:10pm	80	Period 7	12:50pm - 1:28pm	38
			Period 8	1:31 pm - 2:10pm	39

YAAASSS



Lunch Schedules For Semester 1

A Day Lunches - Semester One (Periods 5 & 6) - 2021-22							
A Lunch - 10:55am - 11:20am		B Lunch - 11:23am - 11:48am		C Lunch 11:51am - 12:16pm		D Lunch - 12:19pm - 12:45pm	
Teacher	Class	Teacher	Class	Teacher	Class	Teacher	Class
Agnew	Geometry	Apelanz	Spanish 2	Engel, S.	Global 9H	Brooks	PE-Circuit Training
Ashline	Health	Brown	French 3	Fairchild	12 AP	Daviero	RR
Bertram	Applied Physics	Caballero	Spanish 2	Gaboury	English 9R	Ferlito	Skills Mgt. & Community Work
Blostein	Jazz Studies/ Chamber Music	Freeman	AP Statistics	Gerke	Global 10	Ford	Applied English 11
Caboot	Biology Lab	Keegan	Algebra 1	Goodnow	AP US History	Hotaling	RR
Cole	Construction 2	Malenfant	Geometry	Kaedy	Military History	Kline	Contemporary Graphic Design
Duff	Principi. Eng.	McPartlin	Psychology 1	Klepsch	English 10	Luskin	PE-SC
Galcik	Auto Tec 1	Miller, T.	Financial Algebra	Organ	US History	Marrufo	Applied English 10
Minkler	Earth Science	Pugliese	Part. in Govt.	Smith, G.	Global 9	Quinn	RR
Oldendorf	Molecular Bio	Scheidel	Spanish 3	Strich	English 11R	Ryan, K.	Skills Mgt. & Community Work
Quesnel	Algebra II					Sector/Yost	APPS Desk
VOTEC (PM)	VOTEC (PM)					Staff	Study Hall
						Wood, C.	ISS/APEX
Report to LGI	For Lunch	Report to LGI	For Lunch	Report to LGI	For Lunch	Report to LGI	Report to LGI
Report to 101	For Lunch						

B Day Lunches - Semester One (Periods 5 & 6) - 2021-22							
A Lunch - 10:55am - 11:20am		B Lunch - 11:23am - 11:48am		C Lunch 11:51am - 12:16am		D Lunch - 12:19am - 12:45pm	
Teacher	Class	Teacher	Class	Teacher	Class	Teacher	Class
Bertram	Chemistry Lab	Apelanz	Spanish 3	Agnew	Geometry w/Ext.	Bailey	3-D portfolio
Burger	Biology Lab	Ashline	Health	DiGrigoli	English 11AP	Bailey	Adv. Sculpture
Christy	Treble Voices	Brown, J.	French 3	Engel, S.	Global 9H	Brooks	PE-TS
Cole	Constr. Practicum	Engel, B.	English 9R	Gerke	Global 10	Caboot	Intervention
Digrigoli	English 11 AP	Fairchild	English 12-SciFi	Goodnow	Global 10H	Daviero	RR
Duff	Fund. of Constr.	McPartlin	AP Gov. Poly.	Kaedy	US History	Dutcher, M.	RR
Dutcher, J.	Auto Tec 2	Minkler	Earth Science	Malenfant	Algebra 1	Ferlito	RR
Galcik	Fundamentals of Tech	Organ	Sociology 1	Mouzakes	English 10R	Ford	RR
Gregory	Studio Art	Pugliese	Psychology 1	Quesnel	Algebra II	Fox	RR
Lambright	CIM	Scheidel	Spanish 2	Smith, G.	Global 9	Gobel	PE-S&C
Panzanaro	Forensics			Strich	English 11R	Kline	Beg. Draw and Paint
Perry	Honors Chem. Lab					Medici	PE-LA
Reddy	Earth Science					Ryan	Skills
Rees	Physics Lab					Sector/Yost	APPS Desk
Votec-PM	VOTEC (PM)					Staff	Study Hall
						Wood	ISS/APEX
Report to LGI	For Lunch	Report to LGI	For Lunch	Report to LGI	For Lunch	Report to LGI	Report to LGI
Report to 101	For Lunch						



**Averill Park High School
Color Zone Map**

Color Zones

Blue - Zone 1

Orange - Zone 2

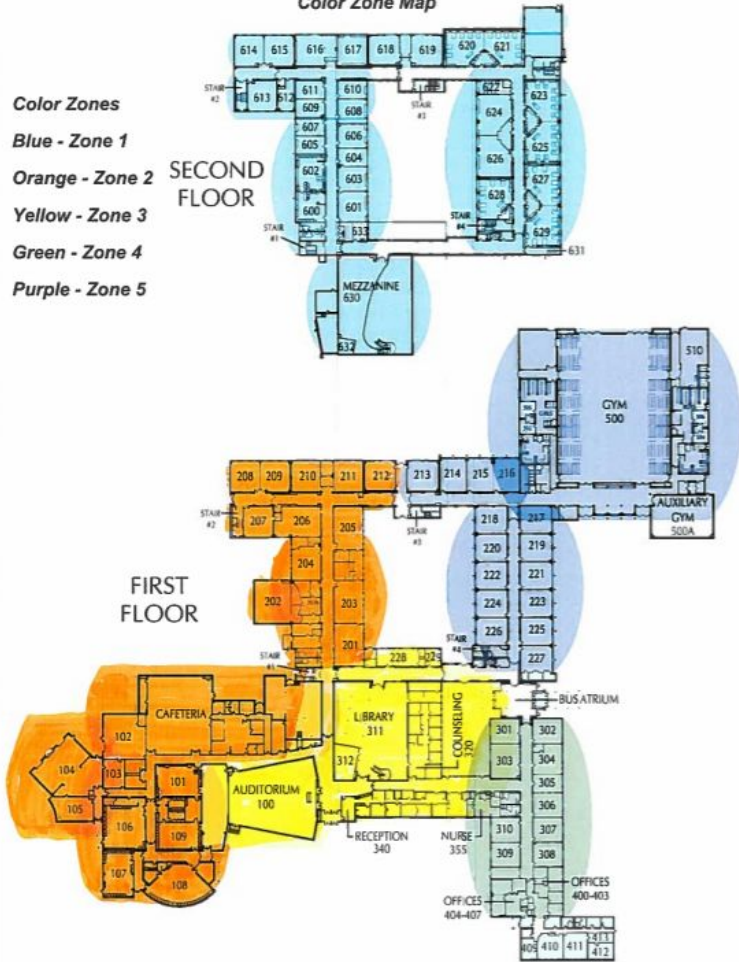
Yellow - Zone 3

Green - Zone 4

Purple - Zone 5

SECOND FLOOR

FIRST FLOOR



Blue- Zone 1	Orange- Zone 2
Restrooms Near Room 600 & 621	Restrooms Near Room 201 & 102 (Cafeteria/Tech area)
Water Filling Stations by Room 602 & 612	Water Filling Station located at the Corner by the Lobby/Cafeteria Hallway & Room 102 (Cafeteria/Tech area)
Handwashing Stations	Handwashing Stations
Yellow- Zone 3	Green- Zone 4
Restrooms in Green Zone	Restrooms Near Room 310
Water Filling Station by the Nurse's Office	Water Filling Station Near Room 310
Handwashing Stations	Handwashing Stations
Purple- Zone 5	
Restrooms Near the Gym	
Waterfilling Station by the Gym	
Handwashing Stations	

Student Norms at APHS



...maintain three feet of separation between themselves and other whenever possible

..are on time.

...sit in assigned seat daily

...bring all materials to class and do not share materials with others

...wear a mask over their mouth & nose

Classroom Norms APHS students...

CLASSROOM

..use kind words and actions

...allow and respect the viewpoints of others

...complete assigned work on time

...participate actively in class.

...have one student out on a pass



...use the bathroom designated for their zone

Bathroom Norms

APHS Students...

...do not use illicit items or substances while in the restroom (vaping, etc.)

...sign in and out of the bathrooms

wash your hands!

...wear a mask over their mouth & nose

...request a pass from their teacher and are prepared to display it to staff

...follow monitor instructions as to number of students allowed in the bathroom at one time



Hallway Norms

APHS students...

...walk directly to
scheduled location

...attempt to
social distance
whenever possible

...follow
directional
signs and stay
to the right

...keep masks on,
always covering
mouth and nose

...use school
appropriate
language

...keep
hallways
clean

...arrive to
class on
time

HALLWAYS



Lunchroom Norms

APHS students...

...wait their turn in the lunch line

...keep area clean by throwing away trash at the conclusion of lunch

...sit in spots designated by a "Warrior Safe Is Warrior Strong" sticker

...follow directions of supervising staff

...will report to their assigned location

...are able to remove masks while seated and eating

...remain seated until the conclusion of lunch

...will wear their masks except while eating

...will keep masks off for no more than 15 minutes

Digital Citizenship APHS students....



...utilize the APPS suite to troubleshoot problems with devices

...treat their devices with care.

...bring their devices to school everyday

...make sure their computer is charged and have their materials ready

...have their camera on and use headphones when needed

....remain on the website or documents requested by the teacher

...avoid using other devices that are distracting

...actively participate, stay attentive and on topic

...use their devices for school related purposes.

We are an Alcohol & Tobacco free campus (This includes Vaping)

Students who violate our Code of Conduct in relation to these issues will be subject to significant disciplinary consequences per the Code of Conduct. Additional consequences may include a loss of privileges in athletics (see Athletic Handbook) &/or extra-curricular activities, per the Code of Conduct.

Please make good choices!!!



Dignity for All Students

At Averill Park High School we celebrate diversity and inclusion for all students.

We expect our student to respect the views of others and promote a positive culture of inclusiveness and support!.

*Please report immediately any incidents of harassment, intimidation or bullying.

For more information regarding expectations please go to the website and click on the link to access our Code of Conduct & Athletic Handbook

Eligibility at APHS

Attendance:

May not exceed 5 unexcused tardies/absences to school per marking period which will be assessed every 5 weeks.

Behavior:

May not incur an infraction that results in an ESD, ISS , Out of School Suspension or more than 3 referrals within a marking period, which will be assessed at the time of infraction.

Achievement:

May not be failing more than one subject which will be assessed every 5 weeks.

Exceptions – Students may request to have their ineligibility reconsidered under the following circumstances:

Absences: Active participation in a restorative attendance circle

Tardies- Active participation in a restorative circle once per quarter

Behavior: Completion of a community service plan

Academic: Implementation of academic recovery plan or documentation that current grade is passing

Student circumstances will be evaluated as outlined above and administration will determine the eligibility of all students, for all events, based on the circumstances of each individual student.

Today we will Cover

Find your Passion at APHS

Athletics

Updates from the Library

Student Parking

News from the Nurse

Where do we go for help

Important Dates

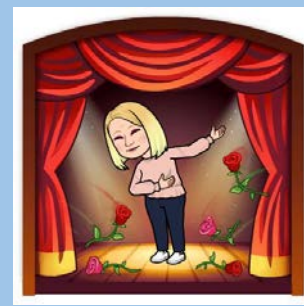


Find Your Passion at APHS



All County Music Festivals
Angler Club
Yearbook
Ballroom Dancing
Best Buddies
Chamber Orchestra
Civic Ecology
Coding Club
Debate Club
Horticulture Club
International Club
Key Club
Masterminds
Mr. AP

National Honor Society
Odyssey of the Mind
Off Broadway Players
Pathfinders
Recycle Club
Robotics Club
SADD
SAGA
School Newspaper
Science Club
Strategy & Gaming
WAPH- TV
World of Difference
YMCA Youth in Government
Become a Class officer



Athletics

Let's go
AP!

At Averill Park we offer the following Sports Teams in:

Boys

Girls

Baseball

Softball

Basketball

Basketball

Bowling

Bowling

Cross Country

Cross Country

Football

Cheer (Football)

Golf

Competitive Cheer

Lacrosse

Lacrosse

Soccer

Soccer

Tennis

Tennis

Outdoor Track

Outdoor Track

Indoor Track

Indoor Track

Wrestling

Volleyball

Ice Hockey

Swimming & Diving



APHS Library



Our Library is temporarily closed due to flood damage. We look forward to seeing your smiling faces amid the bookshelves very soon!



Facts about the the APPS Suite

- Located in the library mezzanine
- Open all day
- Student run
- Able to answer all your technology questions
- Able to assist with any chromebook issues
- Has chromebooks to loan to students

ADVISORY



- A time to seek extra help from teachers
- Socialize with friends
- Get a head start on homework
- Sign up to go to the gym for "free gym"
- Extra-curricular clubs can meet

Parking on Campus



Parking is a privilege for Juniors
And Seniors

Vehicles must be registered by 9/24(forms
are located in the main office and on the
website)

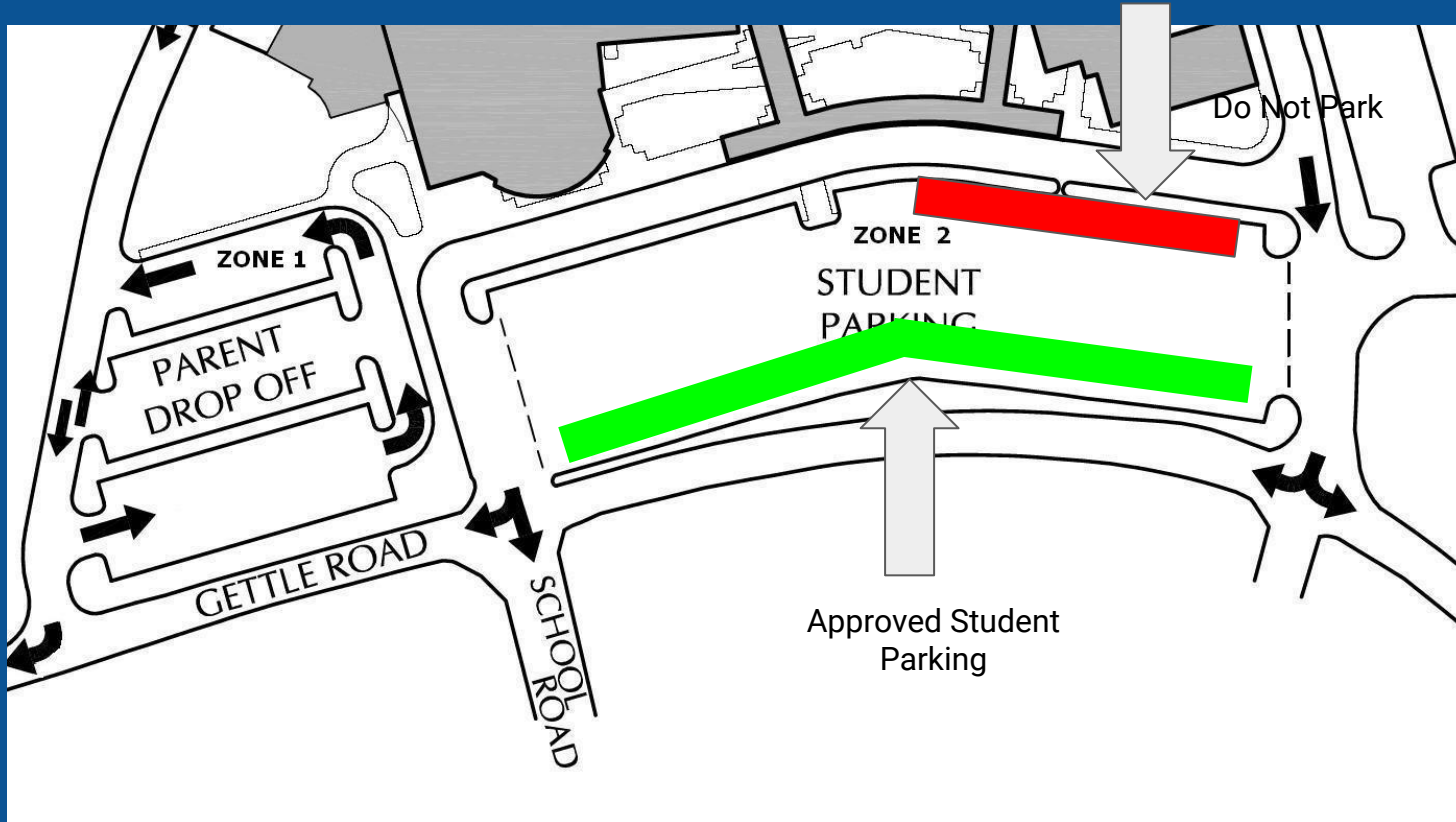
Trucks and SUVs need to park in the back
row

Parking in front of District Office is not
allowed; only **park in the main lot** this year

Drivers need to yield to school busses



Approved Parking Locations



Notes from the Nurse.....

If you are not feeling well please stay home.

Wash your hands often, wear a mask, and stay socially distanced

Students are not allowed to carry any medication. All medication needs to be given to the nurse with doctor's orders for use.

If you are injured and need PE accommodations the nurse will need a doctor's note with a date of return.

Mrs. Miller



Welcome to the Counseling Center

Need help? Please email your counselor
to make an appointment.

We can help with...

- Scheduling
- Peer relationships
- College and career planning
- Student social-emotional support
and strategies



Citizenship Courtyard



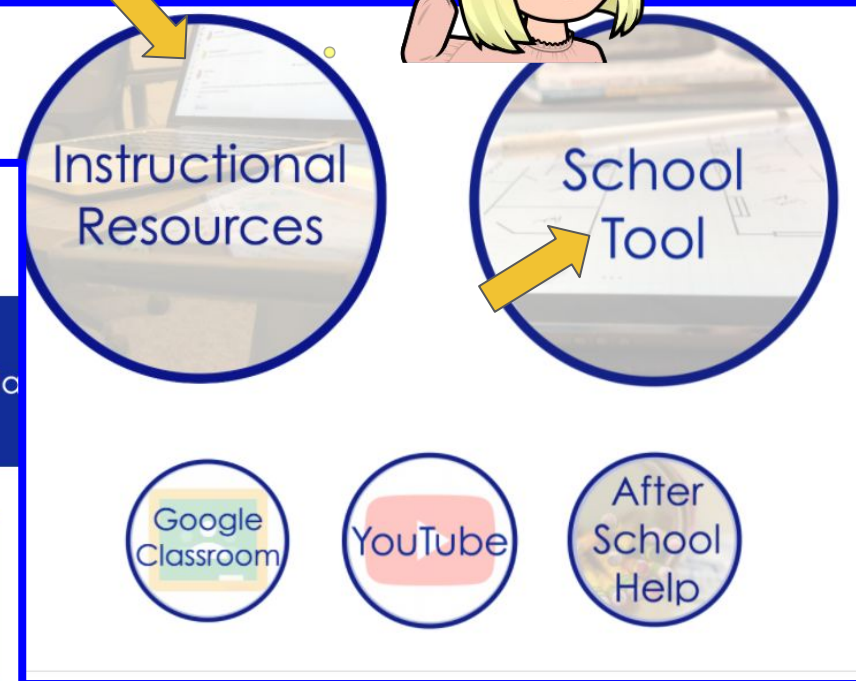
- Allows access to Courtyard during all study halls (except during lunches)
- Acts as your pass in the hallway

Courtyard will be open to all students during lunch blocks weather permitting.

INSTRUCTIONAL RESOURCE PAGE



A screenshot of the school district website's navigation menu. At the top, there are links for HOME, DISTRICT INFORMATION, BOARD OF EDUCATION, PROGRAMS, SERVICES, OUR SCHOOLS, and QUICK LINKS. Below this is a row of school names: AVERILL PARK HIGH SCHOOL, ALGONQUIN MIDDLE SCHOOL, MILLER HILL / SAND LAKE ELEMENTARY, POESTENKILL ELEMENTARY, and WEST SAND LAKE ELEMENTARY. Underneath are icons for Schooltool, Library Media Center, Counseling & Career Center, Course Catalog, and Clubs & Act. A blue bar at the bottom of this section is labeled "Family and Instructional Resources". Yellow arrows point from this menu to the "Instructional Resources" and "School Tool" circles in the adjacent diagram.



A screenshot of the "Course Syllabuses and Resources" page. The title is in a white box at the top. Below it are several blue buttons with white text: "EX", "Art", "Business", "English", "ENL", "Guida", "Library", "LOTE", "Math", "Music", and "OT / PT".

September Dates to Remember

Open House
September 23rd @ 6:30pm

Picture Day
September 20th & 21st

Class of 2022 Junior Prom
September 25th @ 6:00pm

Virtual Financial Aid Night
September 30th at 6 pm

Homecoming Dance
October 2nd

Homecoming Game
October 8th




Every Student
Every Day

stay 

healthy
helpful
& calm

WEAR YOUR


MASK



Welcome Back!!!!

